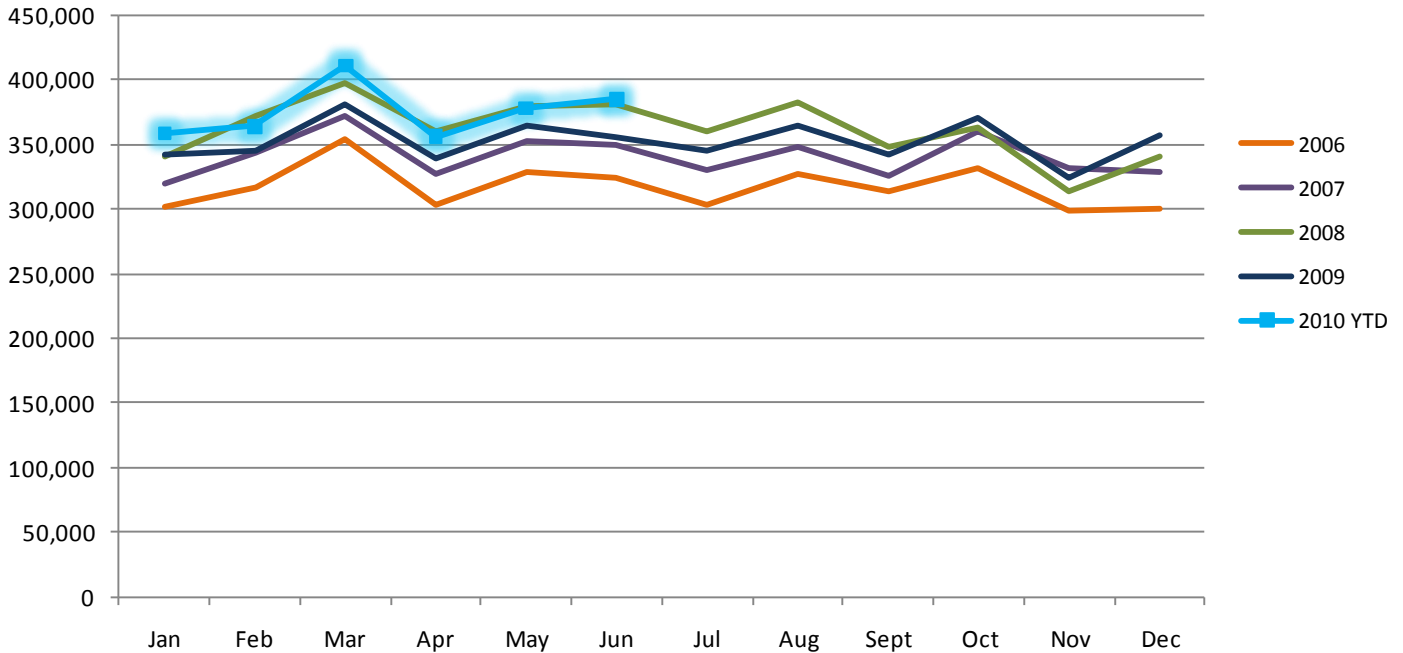


Ottawa Macdonald-Cartier International Airport Total Passenger Volume (2006-2010)



YOW PASSENGER STATISTICS (ENPLANED + DEPLANED) 2006-2010

	2006	2007	2008	2009	2010 YTD
Domestic	2,807,377	3,052,813	3,255,541	3,141,812	1,598,135
Transborder	735,753	746,435	740,369	682,823	374,299
International	264,626	289,280	343,315	408,196	283,321
Total	3,807,756	4,088,528	4,339,225	4,232,831	2,255,755

2006	January	February	March	April	May	June	July	August	September	October	November	December	2006
Domestic	206,535	210,596	236,301	223,935	254,341	253,119	227,324	250,108	240,046	254,676	231,837	218,559	2,807,377
Transborder	58,959	63,186	73,575	62,637	59,281	56,203	57,695	60,359	59,052	65,426	58,006	61,374	735,753
International	36,533	43,057	44,720	16,453	15,588	16,706	18,582	16,130	14,582	12,028	9,474	20,773	264,626
Total	302,027	316,839	354,596	303,025	329,210	326,028	303,601	326,597	313,680	332,130	299,317	300,706	3,807,756
2007	January	February	March	April	May	June	July	August	September	October	November	December	2007
Domestic	210,851	235,469	251,323	242,337	272,469	275,721	253,213	270,567	255,372	282,215	264,126	239,150	3,052,813
Transborder	64,738	64,658	76,486	64,066	64,223	57,709	58,722	60,959	53,945	61,934	56,489	62,506	746,435
International	44,235	43,152	44,132	20,788	15,474	15,688	17,979	16,581	15,917	15,729	11,774	27,831	289,280
Total	319,824	343,279	371,941	327,191	352,166	349,118	329,914	348,107	325,234	359,878	332,389	329,487	4,088,528
2008	January	February	March	April	May	June	July	August	September	October	November	December	2008
Domestic	233,056	251,155	267,806	278,649	305,046	295,233	272,245	295,248	273,378	289,862	245,086	248,777	3,255,541
Transborder	61,235	69,334	78,302	60,611	60,046	58,885	59,673	64,813	52,663	58,510	55,044	61,253	740,369
International	45,878	51,277	51,293	20,671	14,845	26,620	28,102	22,682	21,954	14,985	13,772	31,236	343,315
Total	340,169	371,766	397,401	359,931	379,937	380,738	360,020	382,743	347,995	363,357	313,902	341,266	4,339,225
2009	January	February	March	April	May	June	July	August	September	October	November	December	2009
Domestic	222,561	228,532	250,607	252,146	289,010	282,727	266,745	282,074	269,601	293,127	250,970	253,712	3,141,812
Transborder	61,015	62,734	73,152	58,512	51,843	48,391	53,003	55,758	48,159	55,868	53,601	60,787	682,823
International	58,885	54,496	57,208	28,909	23,555	24,830	26,101	26,117	23,852	21,533	19,533	43,177	408,196
Total	342,461	345,762	380,967	339,567	364,408	355,948	345,849	363,949	341,612	370,528	324,104	357,676	4,232,831
2010	January	February	March	April	May	June	July	August	September	October	November	December	2010 YTD
Domestic	227,003	237,349	274,484	260,653	295,405	303,241							1,598,135
Transborder	61,897	61,593	73,249	63,173	59,092	55,295							374,299
International	70,237	65,379	64,132	32,881	24,159	26,533							283,321
Total	359,137	364,321	411,865	356,707	378,656	385,069							2,255,755

Information provided for the current year is preliminary and subject to change without notice.