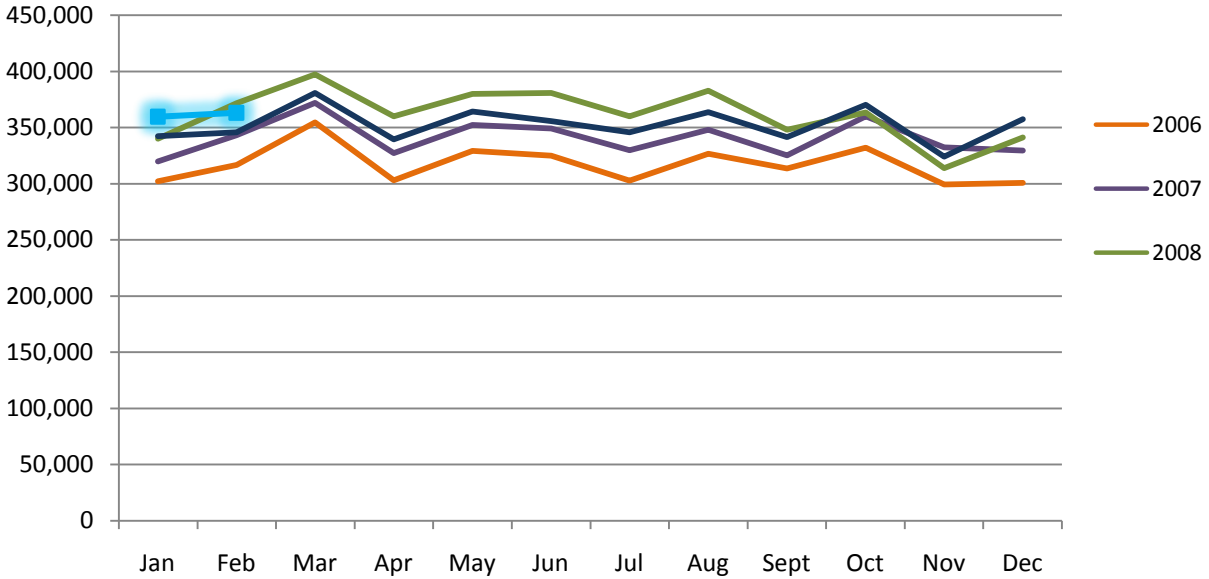


Ottawa Macdonald-Cartier International Airport Total Passenger Volume (2006-2010)



YOW PASSENGER STATISTICS (ENPLANED + DEPLANED) 2006-2010

| | 2006 | 2007 | 2008 | 2009 | 2010 YTD |
|---------------|------------------|------------------|------------------|------------------|----------------|
| Domestic | 2,807,377 | 3,052,813 | 3,255,541 | 3,141,812 | 467,161 |
| Transborder | 735,753 | 746,435 | 740,369 | 682,823 | 120,305 |
| International | 264,626 | 289,280 | 343,315 | 408,196 | 135,297 |
| Total | 3,807,756 | 4,088,528 | 4,339,225 | 4,232,831 | 722,763 |

| 2006 | January | February | March | April | May | June | July | August | September | October | November | December | 2006 |
|---------------|----------------|----------------|----------------|----------------|----------------|----------------|----------------|----------------|----------------|----------------|----------------|----------------|------------------|
| Domestic | 206,535 | 210,596 | 236,301 | 223,935 | 254,341 | 253,119 | 227,324 | 250,108 | 240,046 | 254,676 | 231,837 | 218,559 | 2,807,377 |
| Transborder | 58,959 | 63,186 | 73,575 | 62,637 | 59,281 | 56,203 | 57,695 | 60,359 | 59,052 | 65,426 | 58,006 | 61,374 | 735,753 |
| International | 36,533 | 43,057 | 44,720 | 16,453 | 15,588 | 16,706 | 18,582 | 16,130 | 14,582 | 12,028 | 9,474 | 20,773 | 264,626 |
| Total | 302,027 | 316,839 | 354,596 | 303,025 | 329,210 | 326,028 | 303,601 | 326,597 | 313,680 | 332,130 | 299,317 | 300,706 | 3,807,756 |
| 2007 | January | February | March | April | May | June | July | August | September | October | November | December | 2007 |
| Domestic | 210,851 | 235,469 | 251,323 | 242,337 | 272,469 | 275,721 | 253,213 | 270,567 | 255,372 | 282,215 | 264,126 | 239,150 | 3,052,813 |
| Transborder | 64,738 | 64,658 | 76,486 | 64,066 | 64,223 | 57,709 | 58,722 | 60,959 | 53,945 | 61,934 | 56,489 | 62,506 | 746,435 |
| International | 44,235 | 43,152 | 44,132 | 20,788 | 15,474 | 15,688 | 17,979 | 16,581 | 15,917 | 15,729 | 11,774 | 27,831 | 289,280 |
| Total | 319,824 | 343,279 | 371,941 | 327,191 | 352,166 | 349,118 | 329,914 | 348,107 | 325,234 | 359,878 | 332,389 | 329,487 | 4,088,528 |
| 2008 | January | February | March | April | May | June | July | August | September | October | November | December | 2008 |
| Domestic | 233,056 | 251,155 | 267,806 | 278,649 | 305,046 | 295,233 | 272,245 | 295,248 | 273,378 | 289,862 | 245,086 | 248,777 | 3,255,541 |
| Transborder | 61,235 | 69,334 | 78,302 | 60,611 | 60,046 | 58,885 | 59,673 | 64,813 | 52,663 | 58,510 | 55,044 | 61,253 | 740,369 |
| International | 45,878 | 51,277 | 51,293 | 20,671 | 14,845 | 26,620 | 28,102 | 22,682 | 21,954 | 14,985 | 13,772 | 31,236 | 343,315 |
| Total | 340,169 | 371,766 | 397,401 | 359,931 | 379,937 | 380,738 | 360,020 | 382,743 | 347,995 | 363,357 | 313,902 | 341,266 | 4,339,225 |
| 2009 | January | February | March | April | May | June | July | August | September | October | November | December | 2009 |
| Domestic | 222,561 | 228,532 | 250,607 | 252,146 | 289,010 | 282,727 | 266,745 | 282,074 | 269,601 | 293,127 | 250,970 | 253,712 | 3,141,812 |
| Transborder | 61,015 | 62,734 | 73,152 | 58,512 | 51,843 | 48,391 | 53,003 | 55,758 | 48,159 | 55,868 | 53,601 | 60,787 | 682,823 |
| International | 58,885 | 54,496 | 57,208 | 28,909 | 23,555 | 24,830 | 26,101 | 26,117 | 23,852 | 21,533 | 19,533 | 43,177 | 408,196 |
| Total | 342,461 | 345,762 | 380,967 | 339,567 | 364,408 | 355,948 | 345,849 | 363,949 | 341,612 | 370,528 | 324,104 | 357,676 | 4,232,831 |
| 2010 | January | February | March | April | May | June | July | August | September | October | November | December | 2010 YTD |
| Domestic | 228,251 | 238,910 | | | | | | | | | | | 467,161 |
| Transborder | 61,275 | 59,030 | | | | | | | | | | | 120,305 |
| International | 70,138 | 65,159 | | | | | | | | | | | 135,297 |
| Total | 359,664 | 363,099 | | | | | | | | | | | 722,763 |

Information provided for the current year is preliminary and subject to change without notice.